

RENEWING OLDER TOWN CENTRES

Stroud Local Strategic Partnership

Dr Nicholas Falk
Executive Director

URBED Trust

www.urbedtrust.org

The American challenge: 'Just do it!'

‘

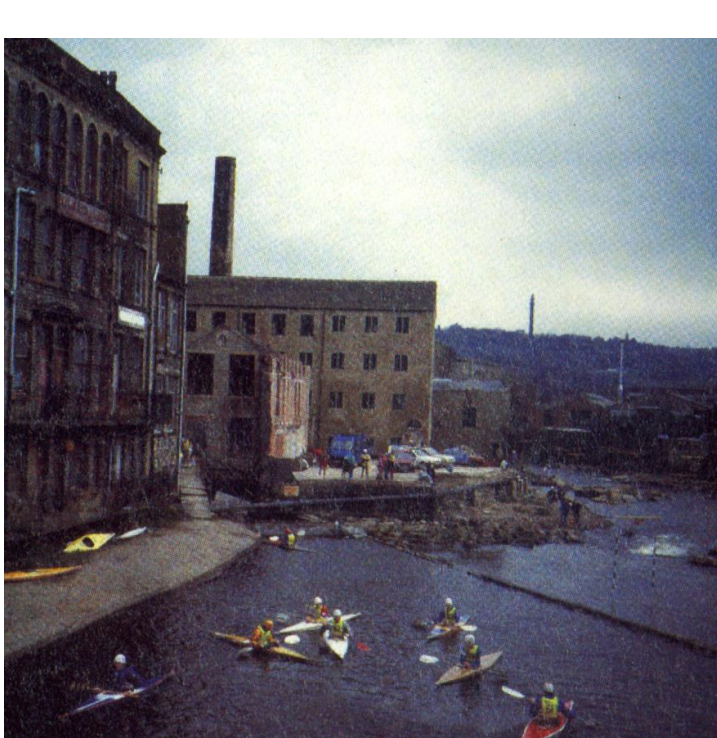


getting-out-of-the-hole.ukGetting Britain out of the hole – A plan for the UK economy

getting-out-of-the-hole.ukGetting Britain out of the hole – A plan for the UK economy

The UK must recycle its assets

Sowerby Bridge Heritage Action Zone



Cities grew around transport nodes

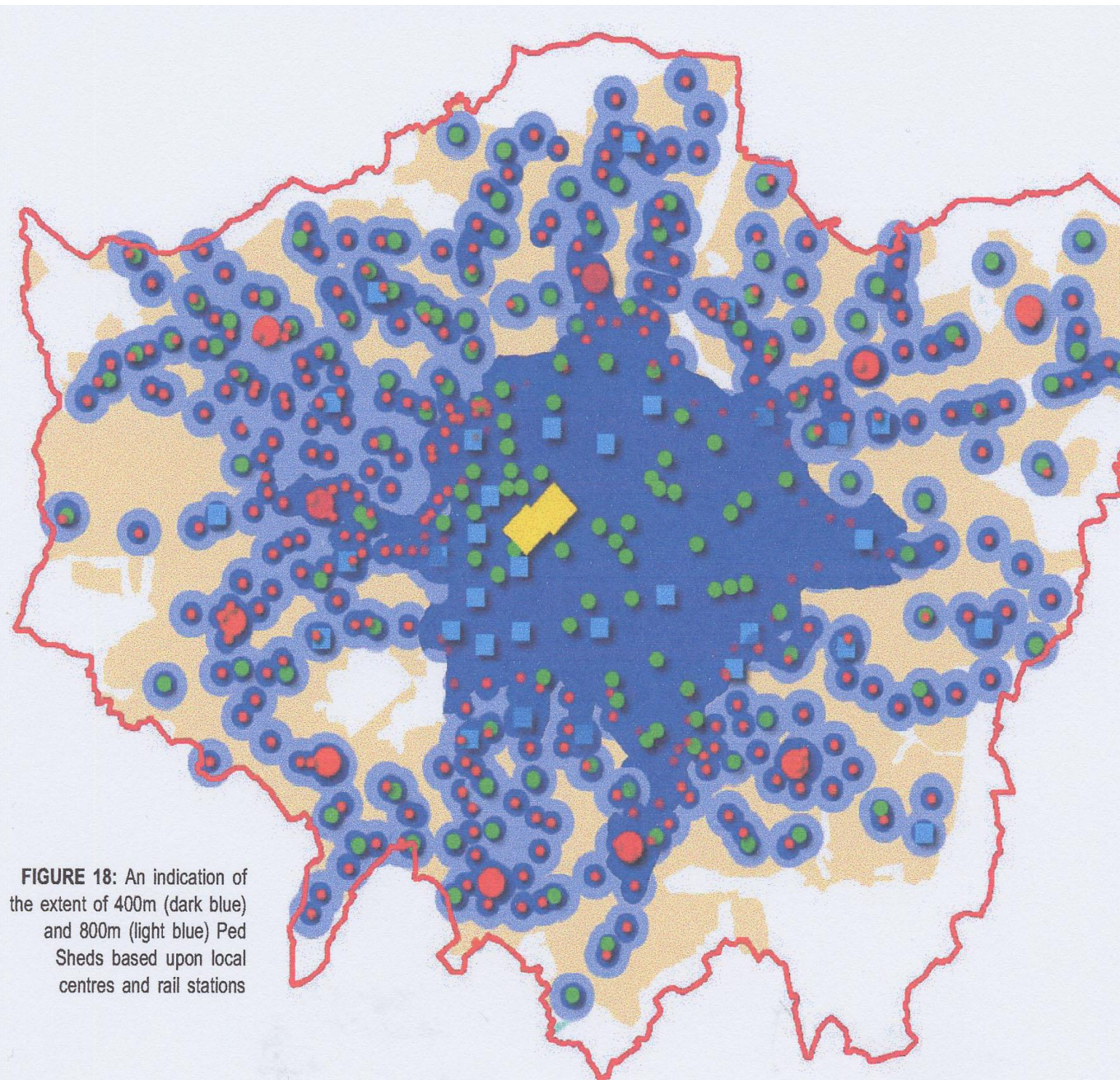
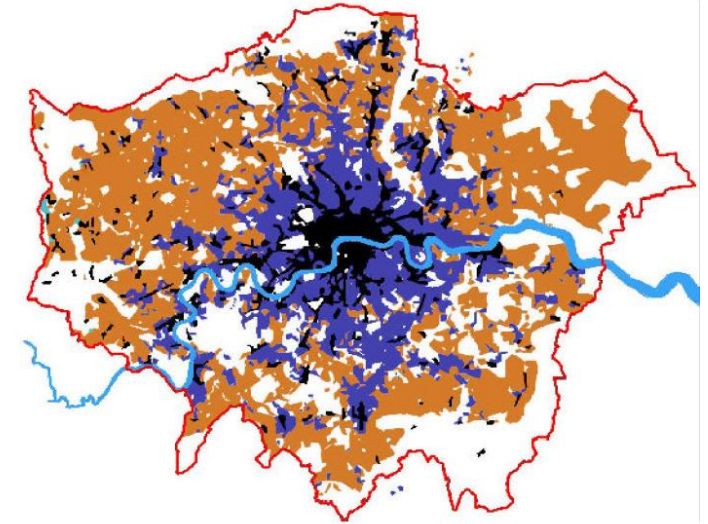
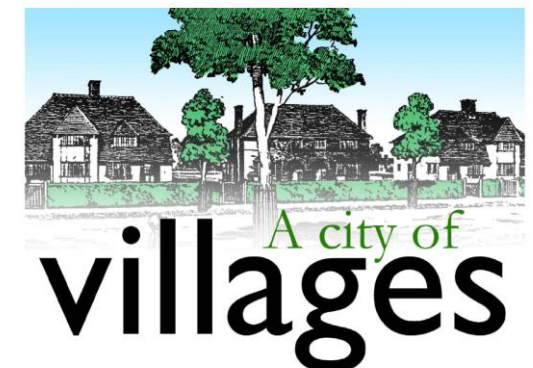


FIGURE 18: An indication of the extent of 400m (dark blue) and 800m (light blue) Ped Sheds based upon local centres and rail stations



GREATER LONDON AUTHORITY

Mayor of London

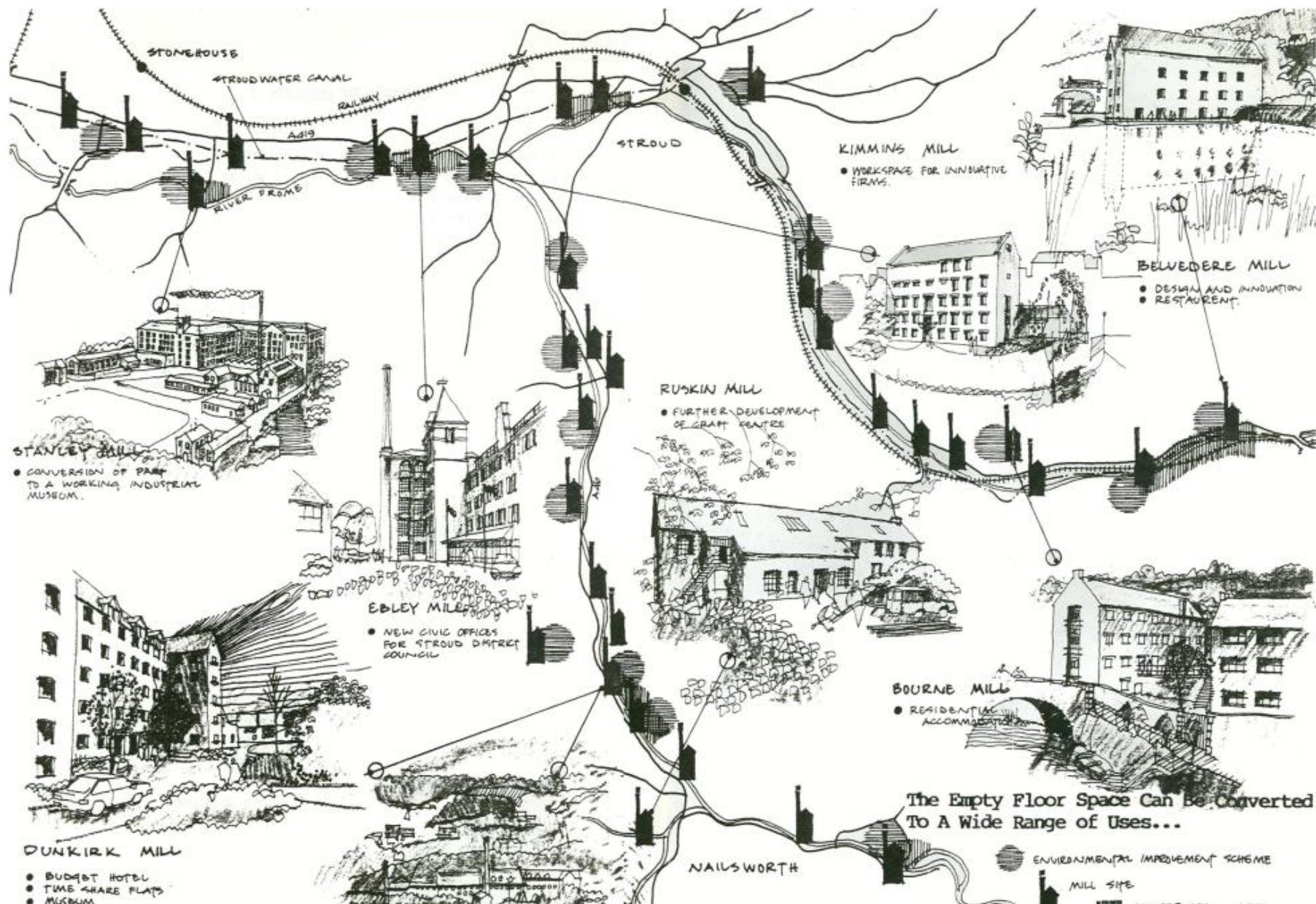


Promoting a sustainable future for London's suburbs

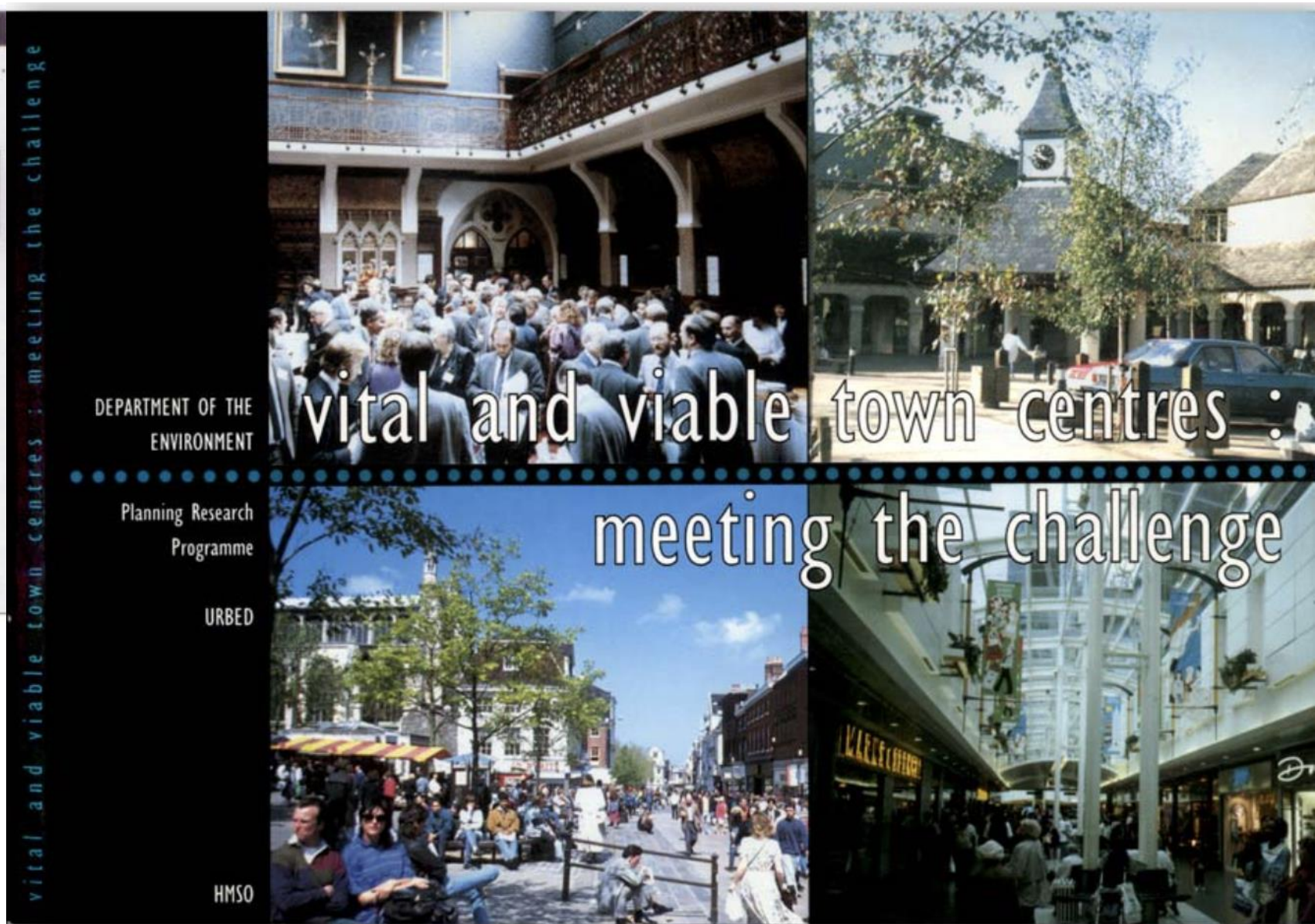
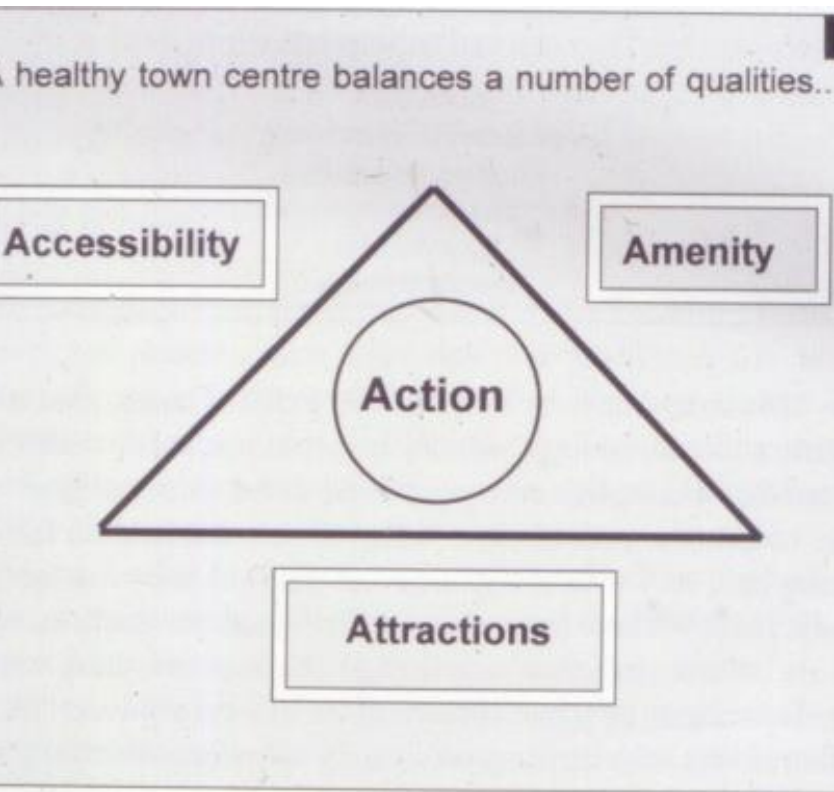
Report by URBED with the TCPA for the Greater London Authority

May 2002

WE COULD MAKE MORE OF OUR TRANSPORT HERITAGE: the 'string of pearls'



Town centre health checks



I. How well are our town centres doing?



- ❑ No longer such ideal places for families
- ❑ Many more retail competitors eg Internet
- ❑ Cars dominate
- ❑ Problems with image
- ❑ But also some 'rising stars' with fresh appeals



Times are changing...



*'Left at the charity shop, past the charity shop,
second right after the charity shop ...'*

WHAT IS TO BE DONE?

1. Rethink what town centres are for
2. Share lessons
3. Set up '**beacon**' projects
4. Recast charges on property



2. What are town centres good for ?



Over the Edge?



Town centres and the London economy

A REPORT for
THE NORTH LONDON STRATEGIC ALLIANCE and
WEST LONDON ALLIANCE

Information and the knowledge economy, e.g.
market research offices

Creative and culture quarters, e.g. design,
performing arts

Community services, e.g. health, education,
municipal, voluntary/third sector

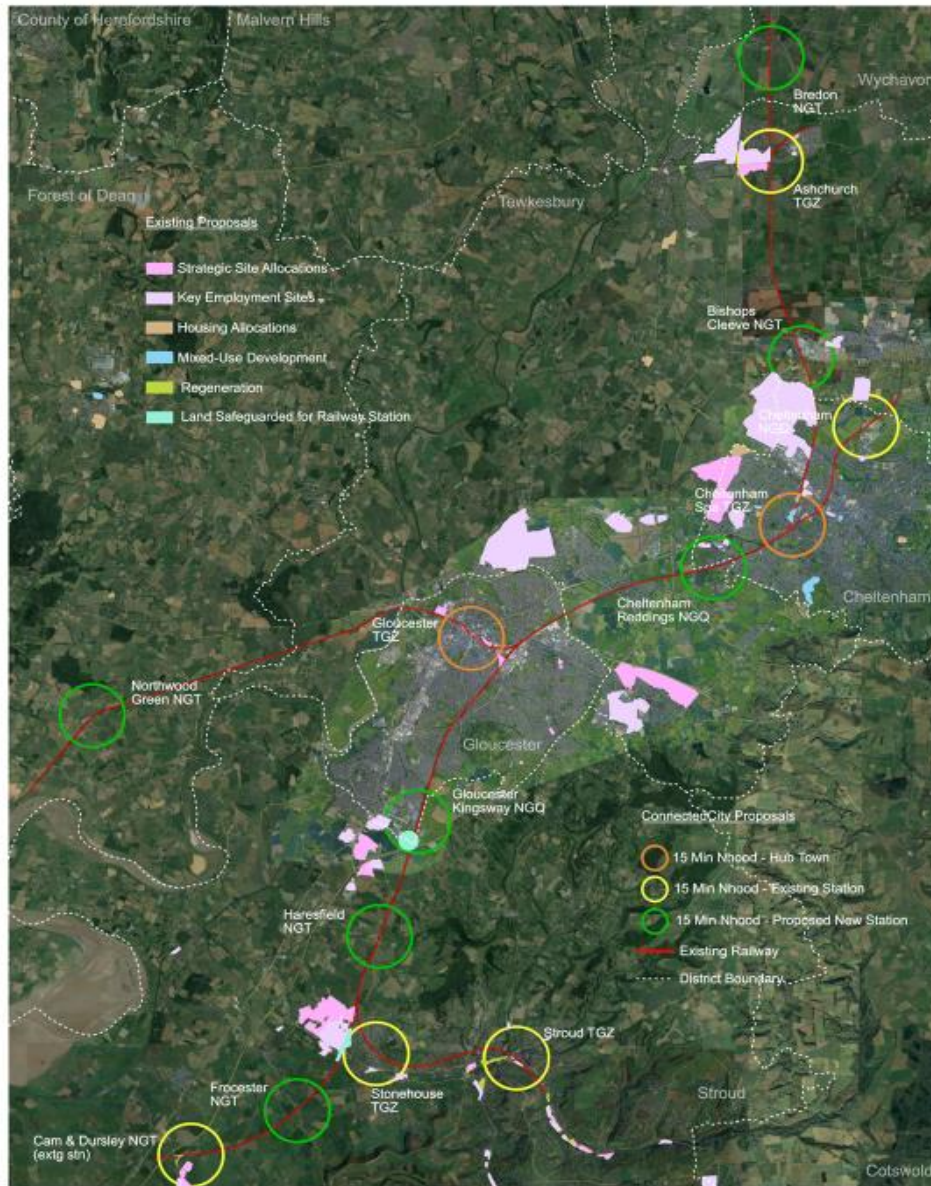
Evening economy, e.g. eating and drinking out

Enterprise clusters, e.g. biotech, fashion

Learning places, e.g. R&D

Meeting places for all, eg cafes

'STROUD COULD BE THE PART OF A LINEAR 'CITY

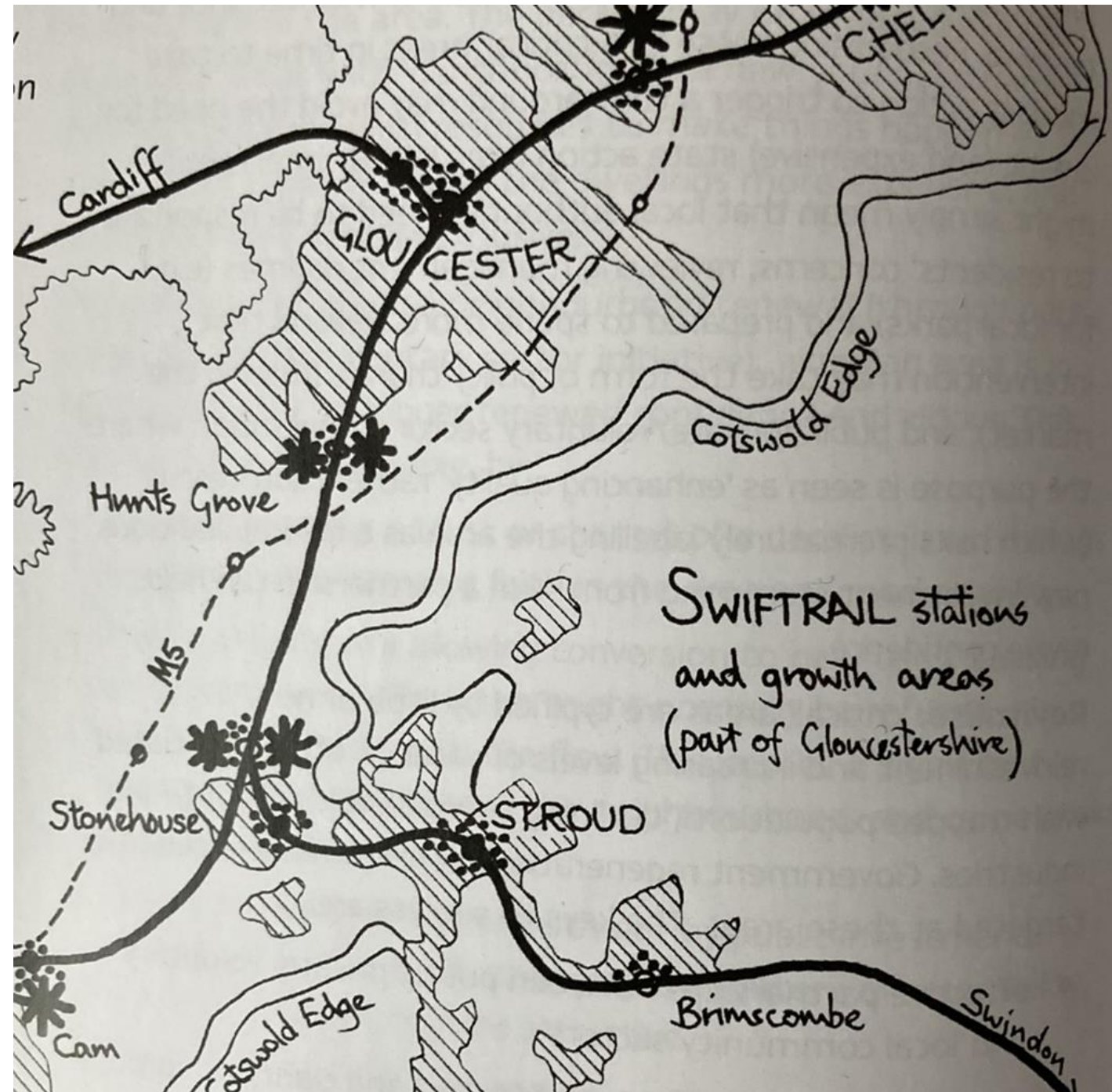


Greater Gloucester & Cheltenham

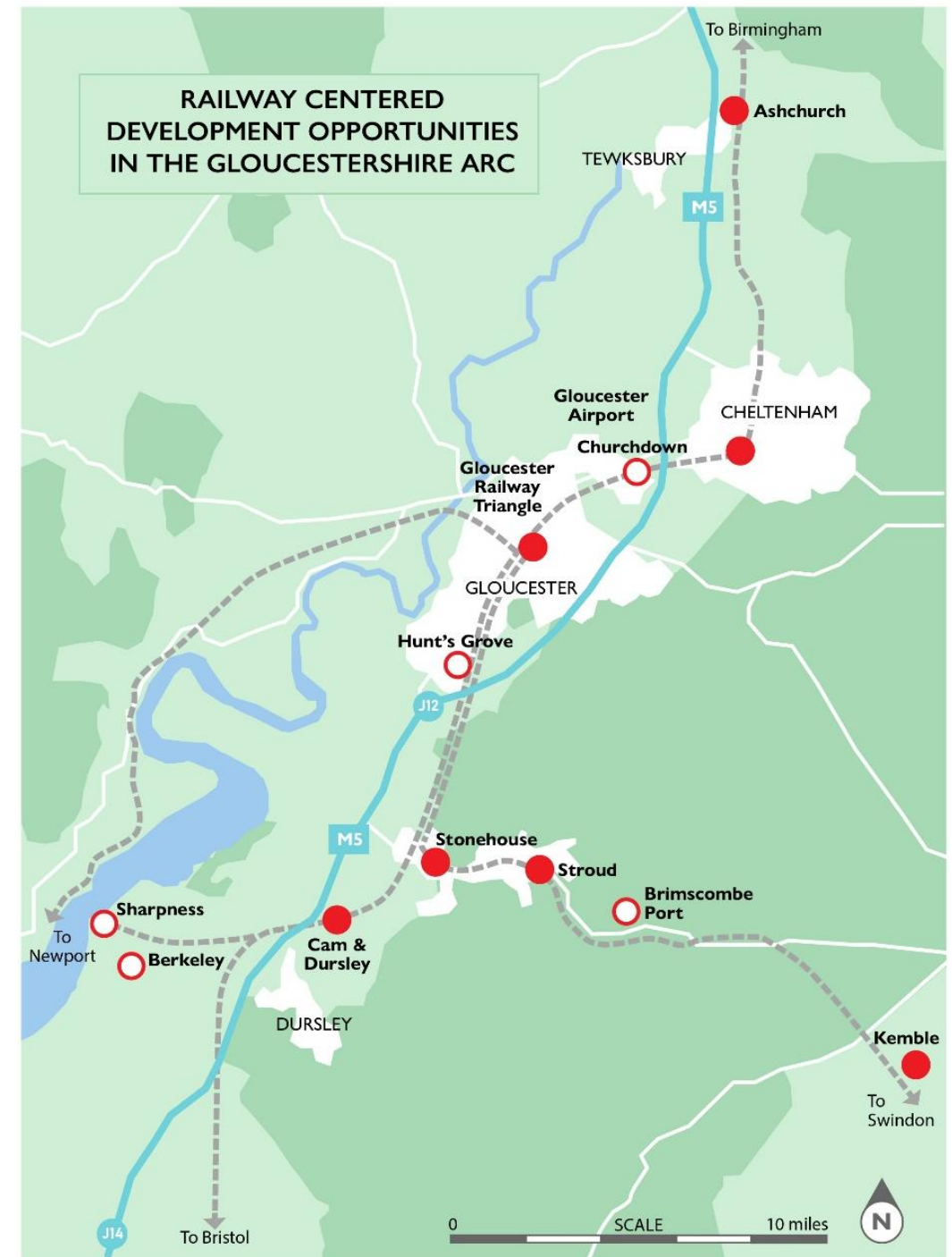
ConnectedCities
unity in diversity

Existing Proposals Compared with ConnectedCity

Scale: All 15 Minute Neighbourhoods are 1km radius



STATIONS ALONG THE 'ARC' SHOULD BE GROWTH NODES



BRIGHTON STATION SHOWS WHAT IS POSSIBLE

New England Quarter, Brighton

