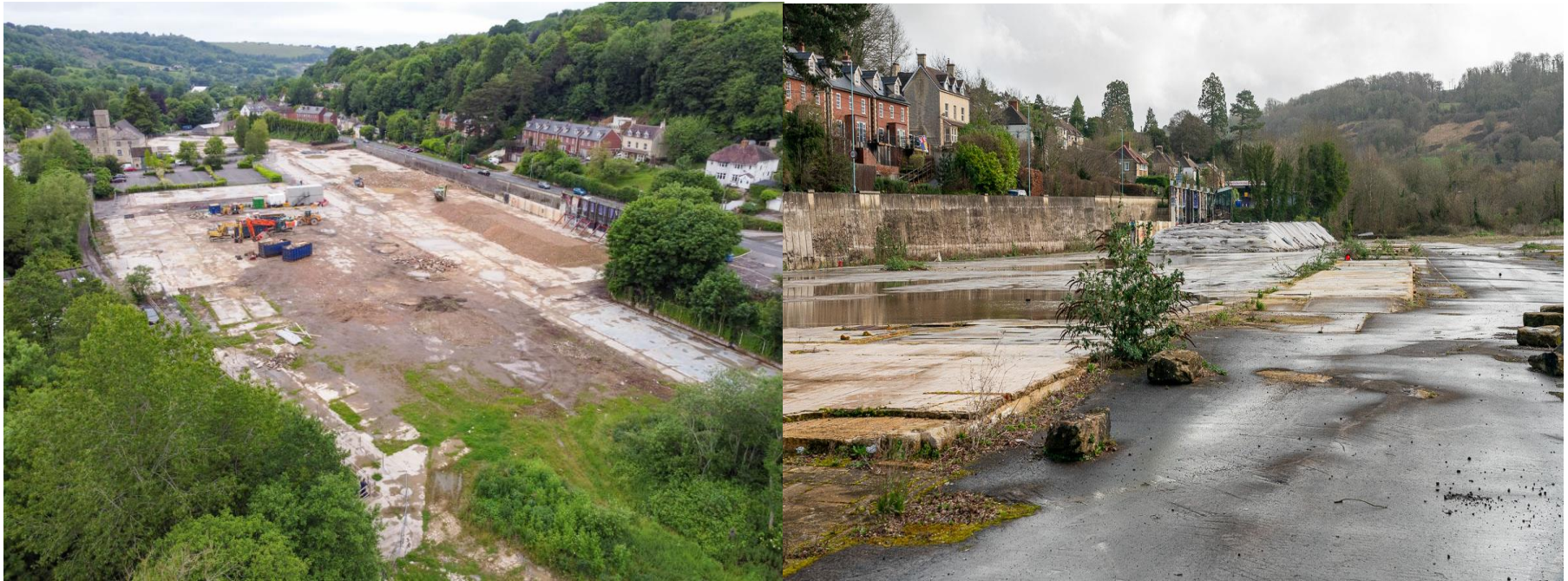


Opportunities for Young Peoples' Personal Development through Activity in the local area

Brimscombe

Current state of Brimscombe port

The Brimscombe port is currently a lifeless waste ground where rubbish is chucked and is just unpleasant to look at and just a huge waste of space when it could be used for community centres or bike tracks as many young people in Stroud area do mountain biking or some form of biking activity.



Having some sort of biking area (Dirt jumps skateparks pump tracks etc) would be a amazing feature to have for the biking community and culture and would be an incredible thing to see.

There would be challenges like the time it takes confirming and starting the process but it would be 100% worth it to have a safe and fun place for our youth to be and finally make some use out of such a big unused landscape.



Options For Biking Opportunities In The Port

Rush skatepark

Rush skatepark was a skatepark where people came from far away to come and practise and multiple Olympic medallists came here such as Charlotte Worthington and Declan Brooks - both are BMX medallists in the Olympics. This was great for the local area.



It was destroyed to build housing that has not been followed up on since 2021, 5 years ago



Charlotte Worthington

Dirt Jumps.

Pros

- Funnest to ride and will attract the most people
- Have dig days were the community helps and all works together
- Have the community involved to decide on what type of jumps/features to build

Cons

- Permission needed to build
- Where to get the dirt and supplies from. (spades pickaxes diggers etc.)
- Easier in woods so lots more materials would be needed



Skatepark.

Pros.

- Easiest To Build
- Accessible with most action sports. (MTB BMX Scooter Skateboard Roller Blades ECT)
- Fun For All Skill Levels

Cons.

- Getting materials Needed (Wood, Metal Concrete)
- Price



Pump Track.

Pros.

- Great for practising technique and developing skill
- Improving your speed
- Accessible for multiple Skill Levels.

Cons.

- Could be a challenge to build
- Can get repetitive.



ThePhoto by PhotoAuthor is licensed under CCYUSA.